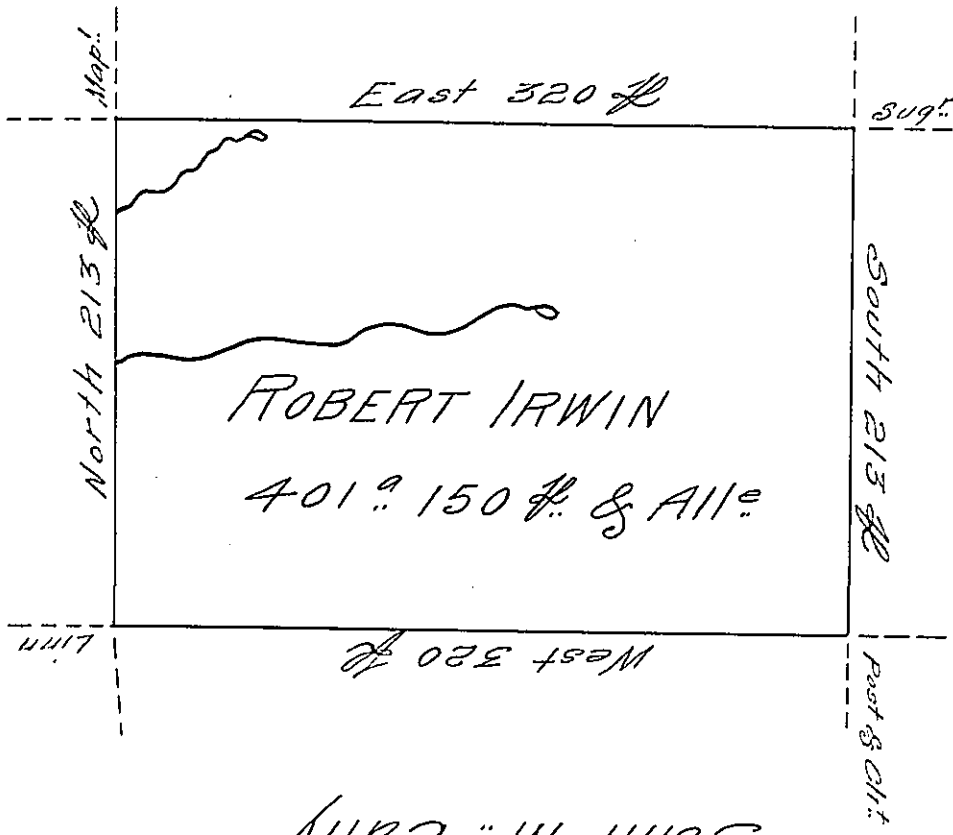


Thomas Rees

Alexander Mc Dowel



John Mc Call

Situate on the west Side of French Creek
 in Allegheny County Containing 401.9 150 ft. &
 All. of Six ft Cent for Roads &c. Surveyed the
 3^d day of November 1794 In pursuance of his
 Improvement Bearing date as above.

W^m Power D^y. Sr

To Daniel Brodhead Esq^r.
 Surveyor General

IN TESTIMONY that the above is a copy of the original remaining on file in
 the Department of Internal Affairs of Pennsylvania, made
 conformably to an Act of Assembly approved the 16th day of
 February, 1833, I have hereunto set my Hand and caused
 the Seal of said Department to be affixed at Harrisburg,
 this tenth day of September 1906

Lea C. Brown
 Secretary of Internal Affairs.